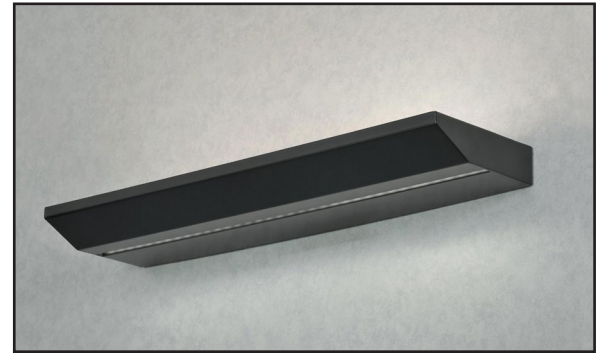


INSTALLATION GUIDE



RANGE NAME	SOVEREIGN ECOBLADE WEDGE
PRODUCT TYPE	INTERIOR WALL UP/DOWN LIGHT
PRODUCT RANGE CODE	S18540



Our products are subject to the Directive 2012/19/EU (Waste Electrical and Electronic Equipment - WEEE) and should always be disposed of separately at the end of their lifespan.



This product complies with all CE related European directives, including the Low Voltage Directive (2014/35/EU) and the EMC Directive (89/336/EEC).



Suitable for mounting on normally combustible surfaces.



This product is Class 1 in electrical safety, meaning it is electrically insulated and provided with a connection to earth.



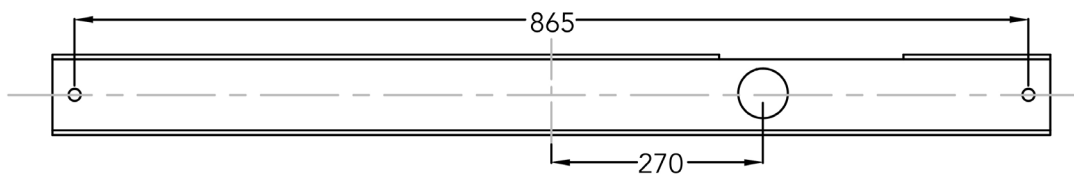
The light source contained in this luminaire shall only be replaced by the manufacturer or a similar qualified person.



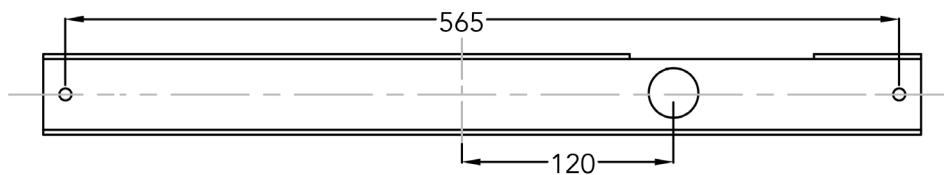
Do not connect to a temporary electricity supply. This may damage the electronics.

WALLBOX DIMENSIONS (mm)

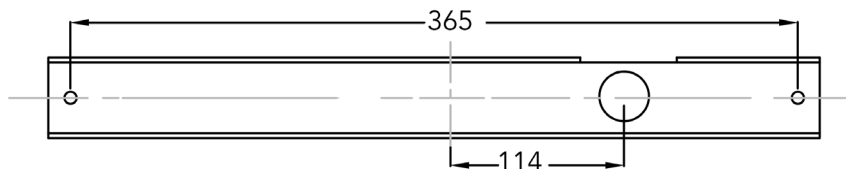
900mm VERSION



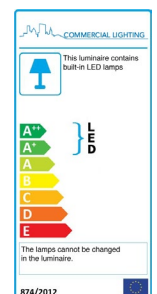
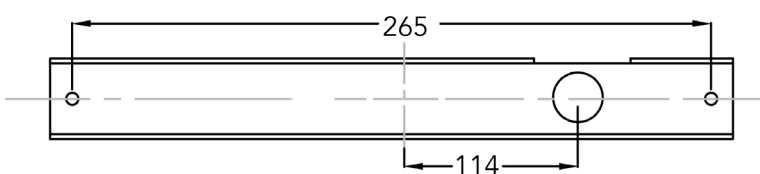
600mm VERSION



400mm VERSION



300mm VERSION



INSTALLATION GUIDE

1 Place wall box in position on wall and secure through 2 x fixing holes (screws not provided).

2 Connect mains cable to terminal block(s).

WALL

TERMINAL BLOCK

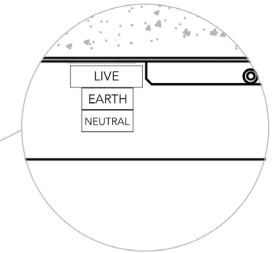
(viewed from above)

3 Connect umbilical cable and slide main body onto wall box.

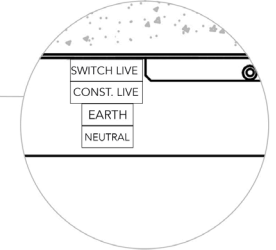
UMBILICAL CABLE

4 Secure the main housing with 3 countersunk screws (provided).

NON-DIMMING / MAINS DIMMING



EMERGENCY



DALI DIMMING / 1-10V DIMMING

