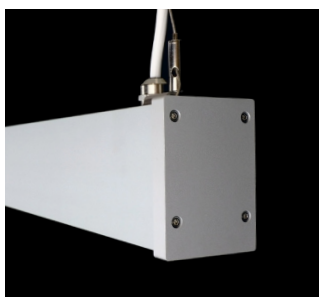


# Pendant & Suspended Specification sheet



**SOVEREIGN®**

Manufactured in the UK by  
Commercial Lighting Systems Ltd

+44 (0)1489 581002

sales@commercial-lighting.co.uk  
www.commercial-lighting.co.uk

## Broadline IP65

### Suspended Linear System



#### Technical

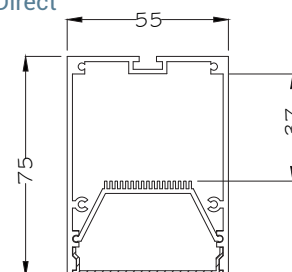
IP rating	IP65
CRI	>90
Lamp Life	50,000 hours
Light Source	Tridonic LLE LED
Voltage	240V
Driver	Integrated high efficiency
Colour Temperature	3000K / 4000K
Beam	Direct only
Control	Dimmable options available
Emergency	Emergency options available

#### Housing

Material	Extruded aluminium
Finish	Powder coated
Housing Colour	Textured white / black / silver / any BS/RAL
Protection Rating	Class 1
Optics	Opalised / Prismatic diffuser
Weight	2.5kg @ 600mm
Mounting	Wire suspension kit
Length	584mm / 1144mm / 1424mm / 1704mm / Bespoke

#### Dimensions

##### Direct



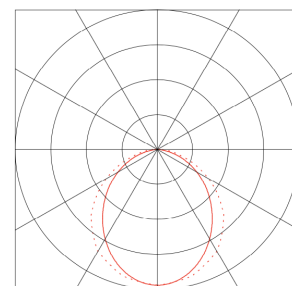
#### Light Output

##### Direct

Length	Col. Temp	Wattage	Lumen Output	Sys Efficacy
584mm	3000K	15W	2350lm	161lm/W
584mm	4000K	15W	2470lm	169lm/W
1144mm	3000K	29W	4700lm	161lm/W
1144mm	4000K	29W	4940lm	169lm/W
1424mm	3000K	37W	5870lm	161lm/W
1424mm	4000K	37W	6170lm	169lm/W
1704mm	3000K	44W	7045lm	161lm/W
1704mm	4000K	44W	7410lm	169lm/W

NOTE: bespoke lengths also available

#### Photometry



#### Order Code

Version		Housing Colour		Col Temperature		Emergency		Control		Suffix
S18620IP	584mm	/X5	Textured white	00	3000K	/10	Non-EM	0	On / off	.8
S18622IP	1144mm	/X4	Textured black	01	4000K	/11	Non maintained EM	1	1-10V dimming	
S18623IP	1424mm	/X2	Textured silver			/14	Maintained 3HR EM	2	DALI dimming	
S18624IP	1704mm							6	DMX	
								7	Bluetooth	

Ignore if Non-EM & Non-dimming

#### Disclaimer text:

Commercial Lighting Systems Ltd uses quality components from leading suppliers, however there may be isolated instances of technology-related failures of individual LEDs during the rated product lifetime. International standards set the tolerance in initial flux and connected load at ±10%. Colour temperature is subject to a tolerance of up to +/-150 Kelvin from the nominal value. Unless stated otherwise, the values apply to an ambient temperature of 25°C. Commercial Lighting is continually developing and improving its products and reserves the right to change technical specifications without prior notice.